

DRUM PRACTICE SHEET 9-13-15

ADDED A COUPLE EXTRA THINGS FOR REVIEW.
 READ EVERYTHING THOROUGHLY.

NOTATED BY GUITARSTEVE.COM

ONLY PLAY UP TO BEAT 3 (PLACING THE KICK BETWEEN THE HI HAT)
WHEN THE LEVEE BREAKS

DRUMS

1 AND 2 AND A 3

BUILD UP SPEED. KEEP IT CRISP AND CLEAN
SPEED BURST EXERCISE

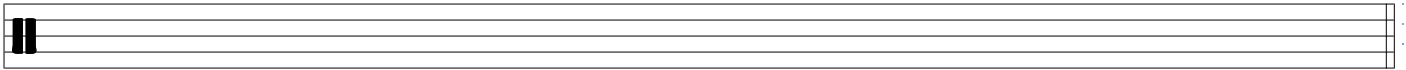
R L R R L R L R L L R L

SINGLE STROKE FOUR (RUDIMENT)

R L R L R L R L L R L R L R L R

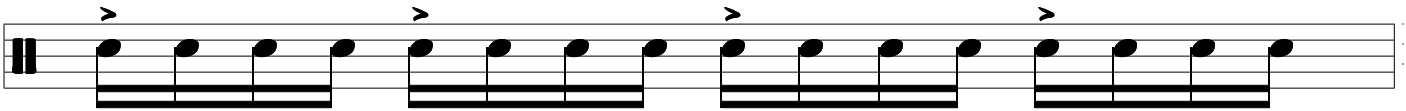
PLAY 3 MEASURES FROM BASIC ROCK PATTERNS: SHEET 1 THEN PLAY 1 MEASURE OF ANY FILL
FILL SHEET 1

FLAM FLAM



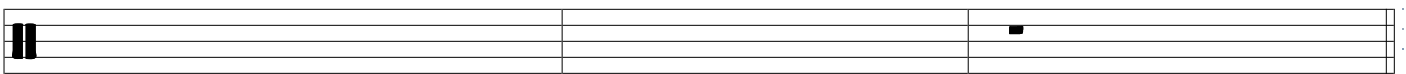
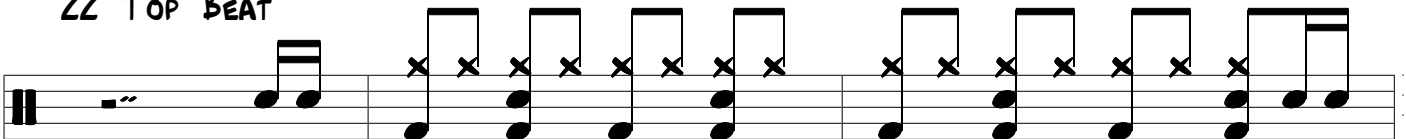
ACCENT STUDY STEMS POINT DOWN BUT IT'S PLAYED THE SAME

WIPE OUT!



ROCK BEAT 2 WITH 16TH NOTE PICKUP NOTES

ZZ TOP BEAT

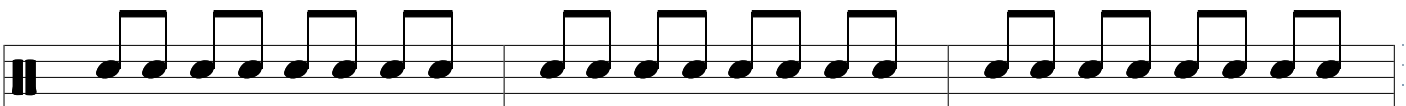


SINGLE STROKE ROLL

DOUBLE STROKE ROLL

PARADIDDLE

RUDIMENTS

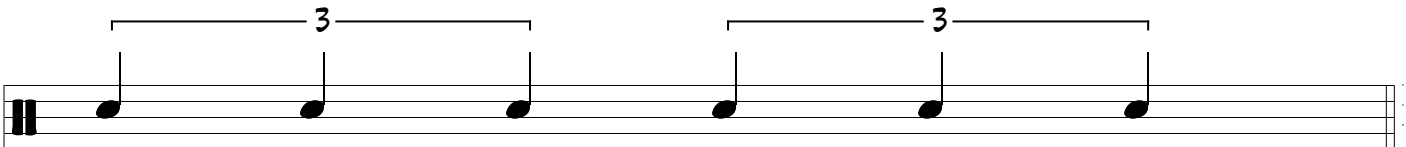


R L R L R L R L

R R L L R R L L

R L R R L R L L

PARA-DIDDLE-DIDDLE



R

L

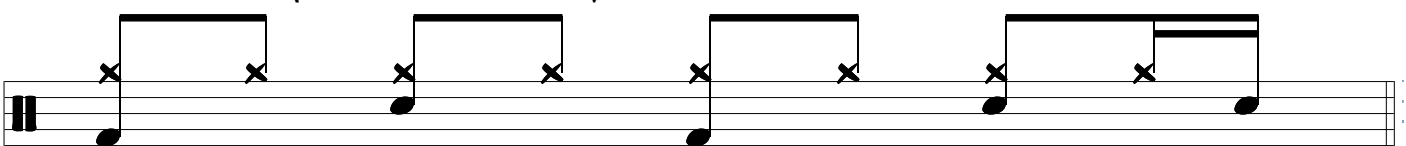
R

R

L

L

9-6-15 BEAT (SNARE IN BETWEEN)



1

AND

2

AND

3

AND

4

AND

A

9-6-15 BEAT (MORE SNARE IN BETWEEN)

Musical notation for a 9-6-15 beat exercise. The notation is on a single staff with a key signature of one flat. It consists of four measures. The first measure has a quarter note on the first line (G4) and a quarter rest. The second measure has a quarter note on the first line (G4) and a quarter rest. The third measure has a quarter note on the first line (G4) and a quarter rest. The fourth measure has a quarter note on the first line (G4) and a quarter rest. Above the staff, there are four groups of notes, each consisting of a quarter note on the first line (G4) and a quarter note on the second line (A4), connected by a horizontal line. The first group is above the first measure, the second above the second, the third above the third, and the fourth above the fourth. Below the staff, the measures are labeled: 1 AND 2 AND A 3 AND 4 AND A.

SNARE-KICK EXERCISE R L R L ALL THE WAY
TRAIN OF DOOM!!! (FOR LACK OF A BETTER NAME)

Musical notation for a snare-kick exercise. The notation is on a single staff with a key signature of one flat. It consists of four measures. Each measure has a quarter note on the first line (G4) and a quarter note on the second line (A4), connected by a horizontal line. Below the staff, there are four groups of notes, each consisting of a quarter note on the first line (G4) and a quarter note on the second line (A4), connected by a horizontal line. The first group is below the first measure, the second below the second, the third below the third, and the fourth below the fourth.