

DRUM PRACTICE SHEET 8-14-15

LOOKS LIKE A LOT BUT SHOULD TAKE ABOUT 10 MINUTES TO GO THROUGH
LEFT OFF BLACK DOG BUT IF YOU GET BORED GIVE IT A GO.

NOTATED BY GUITARSTEVE.COM

ONLY PLAY UP TO BEAT 3 (PLACING THE KICK BETWEEN THE HI HAT)
WHEN THE LEVEE BREAKS

DRUMS

1 AND 2 AND A 3

BUILD UP SPEED. KEEP IT CRISP AND CLEAN
SPEED BURST EXERCISE

R L R R L R

PLAY 3 MEASURES FROM BASIC ROCK PATTERNS: SHEET 1 THEN PLAY 1 MEASURE OF ANY FILL
FILL SHEET 1

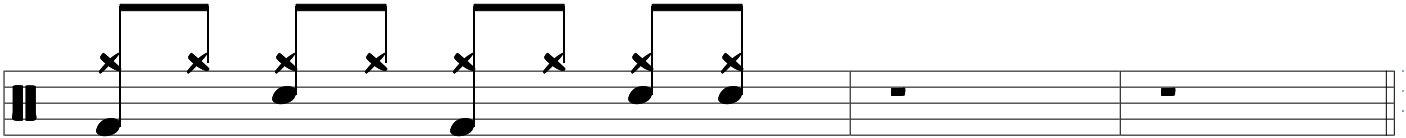
FLAM FLAM

ACCENT STUDY STEMS POINT DOWN BUT IT'S PLAYED THE SAME
WIPE OUT!

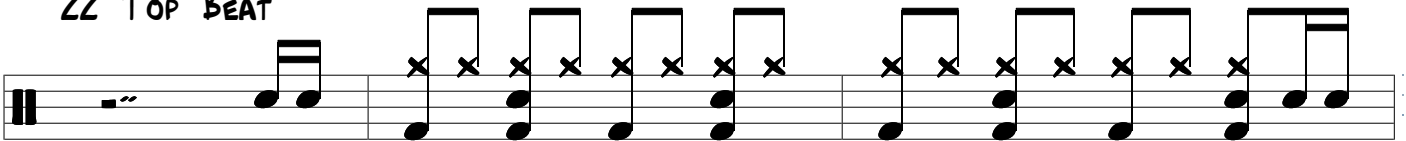
> > > > > > > >



PLAY LOTS MORE THAN 4 TIMES
GOOD WIPE OUT! BEAT



ROCK BEAT 2 WITH 16TH NOTE PICKUP NOTES
ZZ TOP BEAT



RUDIMENTS
SINGLE STROKE ROLL DOUBLE STROKE ROLL PARADIDDLE

